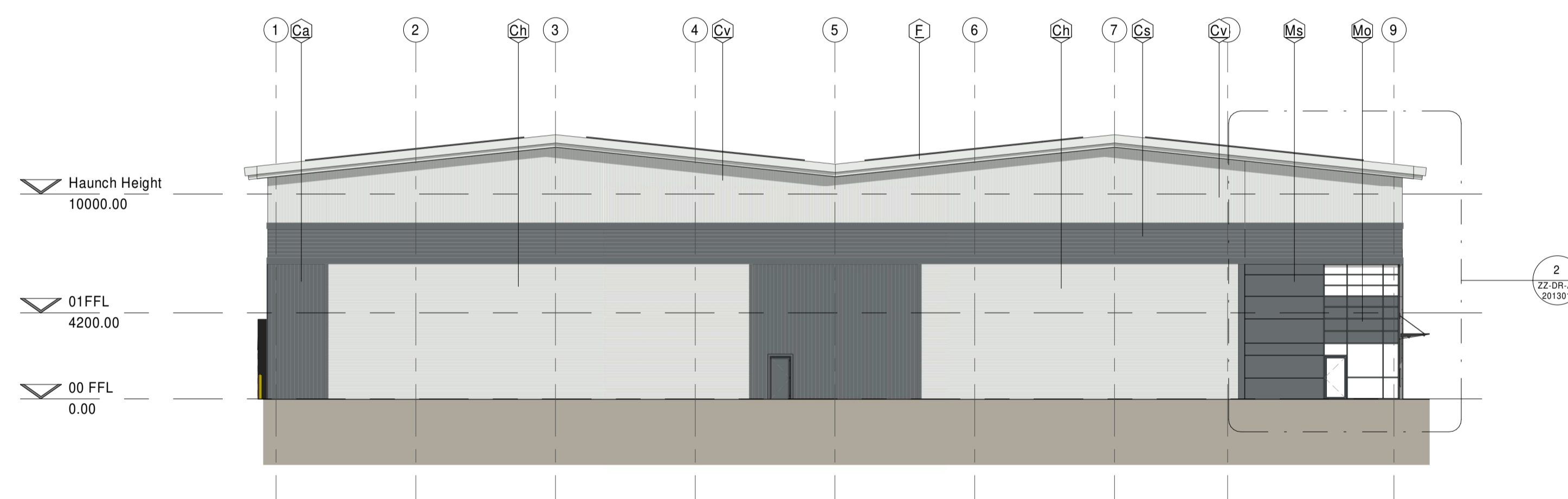
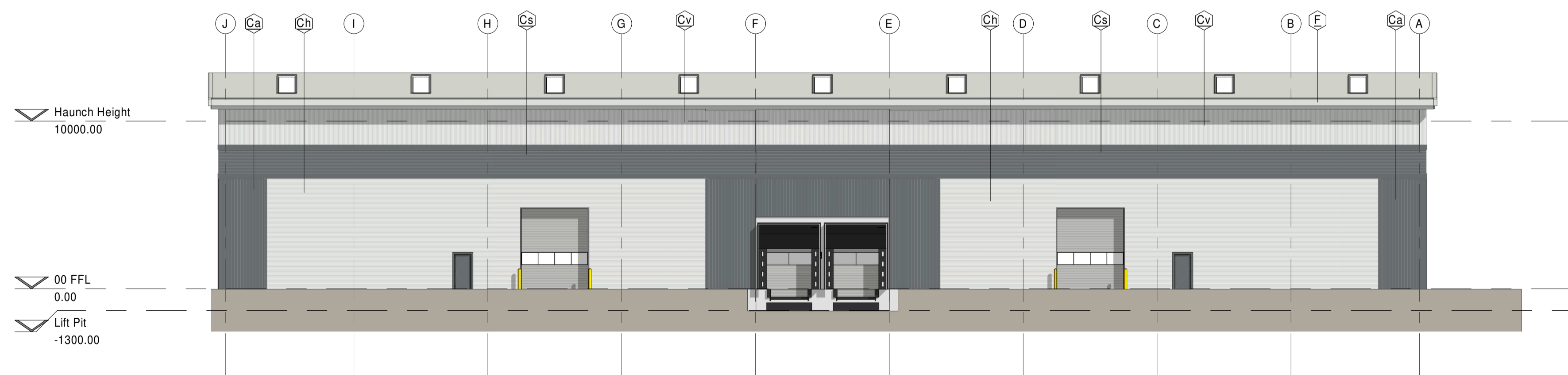


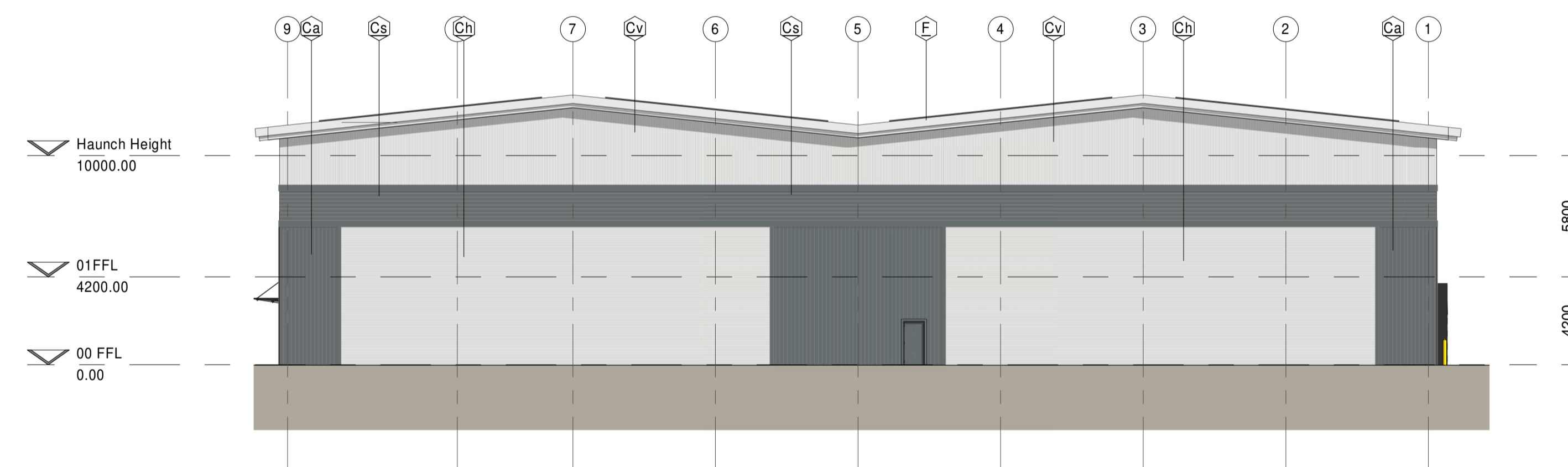
**Elevation North**  
1 : 200



**Elevation East**  
1 : 200



**Elevation South**  
1 : 200



**Elevation West**  
1 : 200

**Materials Notes:**

- Ca Cladding in trapezoidal profile** (laid vertical)  
Profile Ref: JIC\_32-200-1000\_MW5CS  
Colourcoat Prisma Slate Grey - (RAL 7012)
- Ch Cladding in trapezoidal profile** (laid horizontal)  
Profile Ref: JIC\_32-200-1000\_MW5CS  
Colourcoat Prisma Oyster - (RAL 7035)
- Cs Cladding in trapezoidal profile** (laid horizontal)  
Profile Ref: JIC\_32-200-1000\_MW5CS  
Colourcoat Prisma Slate Grey - (RAL 7012)
- Cv Cladding in trapezoidal profile** (laid vertical)  
Profile Ref: JIC\_32-200-1000\_MW5CS  
Colourcoat Prisma Oyster - (RAL 7035)
- D Doors** (external face finish)  
Dock and level access doors - Silver (RAL9006)  
Hydraulic dock leveller - Black (RAL 9005)  
Non-glazed personnel doors - to match adjacent cladding colour  
Glazed personnel doors - see 'W'
- F Fascias and soffits**  
Colour coated pressed metal, Oyster (RAL 7035)
- Mo Microrib in Oyster**  
Walls - CA Trimoterm or equal colour coated composite microrib panel with non-combustible rockwool core.  
Colourcoat Prisma Oyster - (RAL 7035)
- Ms Microrib in Slate Grey**  
  
Walls - CA Trimoterm or equal colour coated composite microrib panel with non-combustible rockwool core. Colourcoat Prisma Slate Grey - (RAL 7012)
- R Roof**  
Colour coated profiled metal sheeting  
Profile ref CA 32 1000 or similar approved  
Colourcoat HPS200 Ultra Goosewing Grey - (RAL 7038)
- W Windows**  
Windows, Curtain Walling and Glazed Doors  
Polyester powder coated finish to aluminium frame - Slate Grey - (RAL 7012). Grey glazing.
- Wo Opacified Windows**  
As 'W' but with opacified glazing.
- X Canopy**  
Glazed canopy. Support metalwork / structure to be colour coated, Oyster (RAL 7035).
- Y Rooflights**  
Non-fragile proprietary insulated rooflight following the profile of the roof.