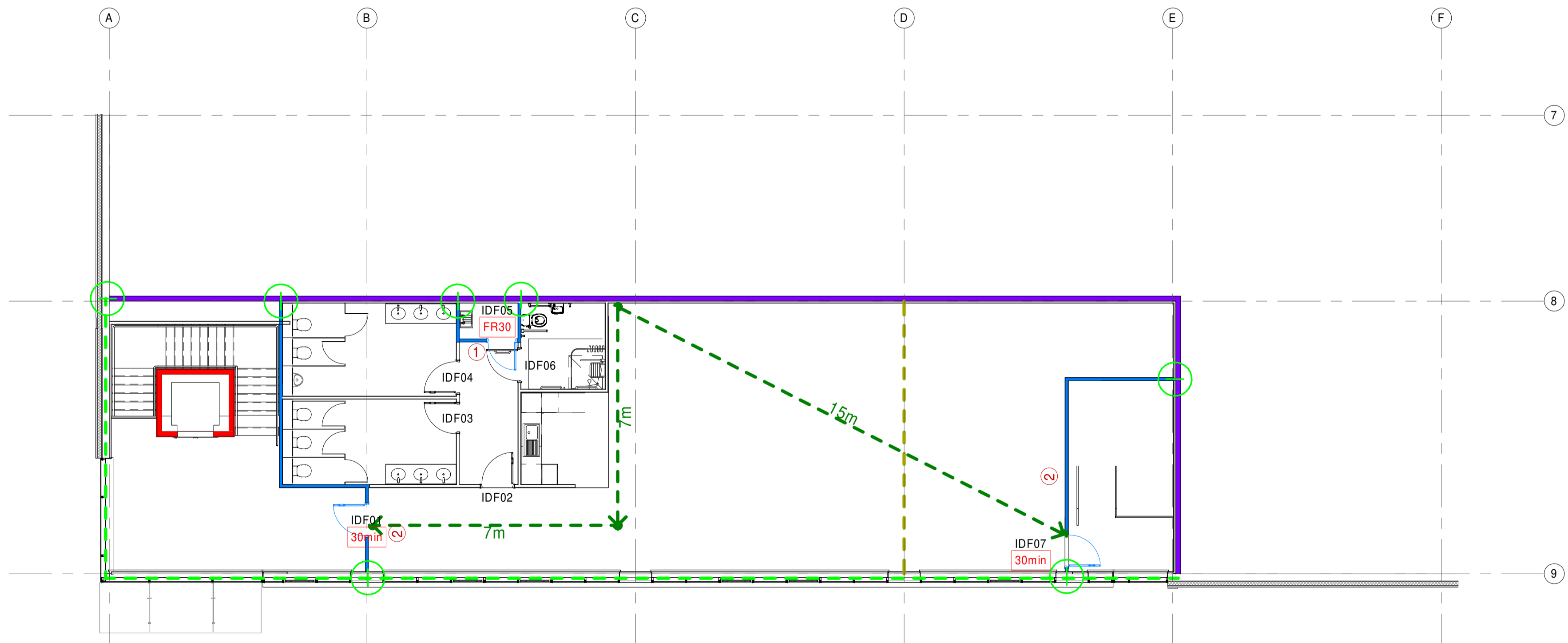


1 Office Fire Plan Level 00  
1 : 100



2 Office Fire Plan Level 01  
1 : 100

**Fire Safety Key:**

- 30min Fire Rating to Wall  
Fire Boundary Location
- 60min Fire Rating to Wall  
Fire Boundary Location
- 120min Fire Rated  
Compartment wall
- - - Horizontal Cavity barrier  
Rockwool SP60 Firestop slab  
fixed with SP/L brackets
- - - Ceiling Cavity Barrier  
(maximum 20m)
- 60min Fire Protection to  
structure and any elements  
where premature failure of the  
load-bearing structure may  
occur.
- 120min Fire Protection to  
structure and any elements  
where premature failure of the  
load-bearing structure may  
occur.
- Ⓜ Vertical cavity barrier  
Rockwool SP60 Firestop slab  
fixed with SP/L brackets
- Fire exit sign with supplementary  
text, positioned at 2.1m above  
door & 2.0m on wall.
- Fire exit signs (double sided)  
with supplementary text,  
suspended at 2.1m from FFL.
- ↔ Indicates arrow direction seen  
from the direction of escape,  
signage as below:

- 1 Fire door keep locked  
sign to both sides of door.
- 2 Fire door keep shut sign to  
both sides of door.
- 3 Push bar to open sign to one  
side of door leaf.
- 4 Exit and fire signs to be in  
accordance with BS 5499:  
Part 1:1990
- 5 Fire exit sign with directional  
arrow.
- 6 Fire exit do not obstruct sign  
to both sides of door.
- 7 General fire procedure sign  
mounted on the wall.
- 8 Fire exit sign with directional  
arrow straight ahead.

**All Fire Protection Requirements to be confirmed by the Approved Inspector**

**Fire Resistance and Compartmentation:**

The Fire resistance of the Building is 120 minutes

Additionally the following items should be provided with fire resistance:

Elements of Structure:	<b>60mins</b>
Walls in Boundary Conditions	<b>60mins</b>
Walls Enclosing Hazardous Storage	<b>60mins</b>
Compartment Wall Between Uses	<b>120mins</b>
Cleaners Cupboards	<b>30mins</b>
Stair Enclosures	<b>30mins</b>
Lift Shafts	<b>60mins</b>
Service Risers	<b>60mins</b>
Cavity Barriers	<b>30mins</b>

**Emergency Lighting:**

Emergency Lighting is to be provided in accordance with BS5266 Part 1 2011  
To be read in conjunction with M&E consultant drawings.



**SGP**  
Architects + Masterplanners

Waterfront House  
2a Smith Way  
Grove Park  
Enderby  
Leicester LE19 1SX

t: +44 (0)116 247 0557

[www.stephengeorge.co.uk](http://www.stephengeorge.co.uk)

Unit H311  
Hartlebury Trading Estate  
Kidderminster

Drawing Name:  
Office Fire Strategy Plans

Drawing Stage: **Tender**

Status: **S3**

SGP File Ref: 13-125-002-SGP-ZZ-M3-A-00001

13-125-006 13/06/22 TP MMS As @ A1 P1  
SGP Project No: Date: Drawn: Team: Indicated: Rev:

Drawing Number:

13125- SGP- 006-ZZ-DR-A- 210101

Project Code Originator Volume Level Type Role Number

