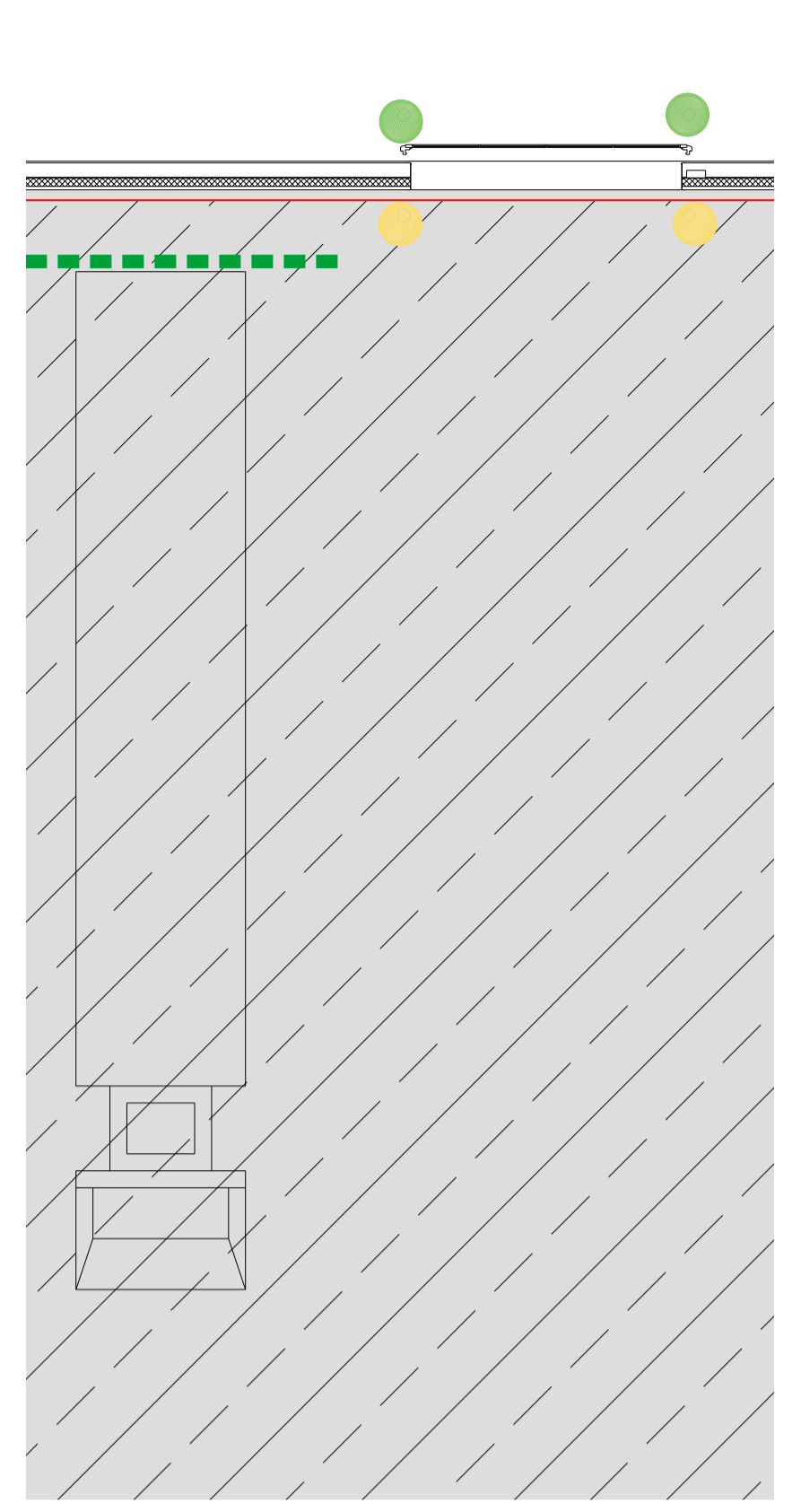
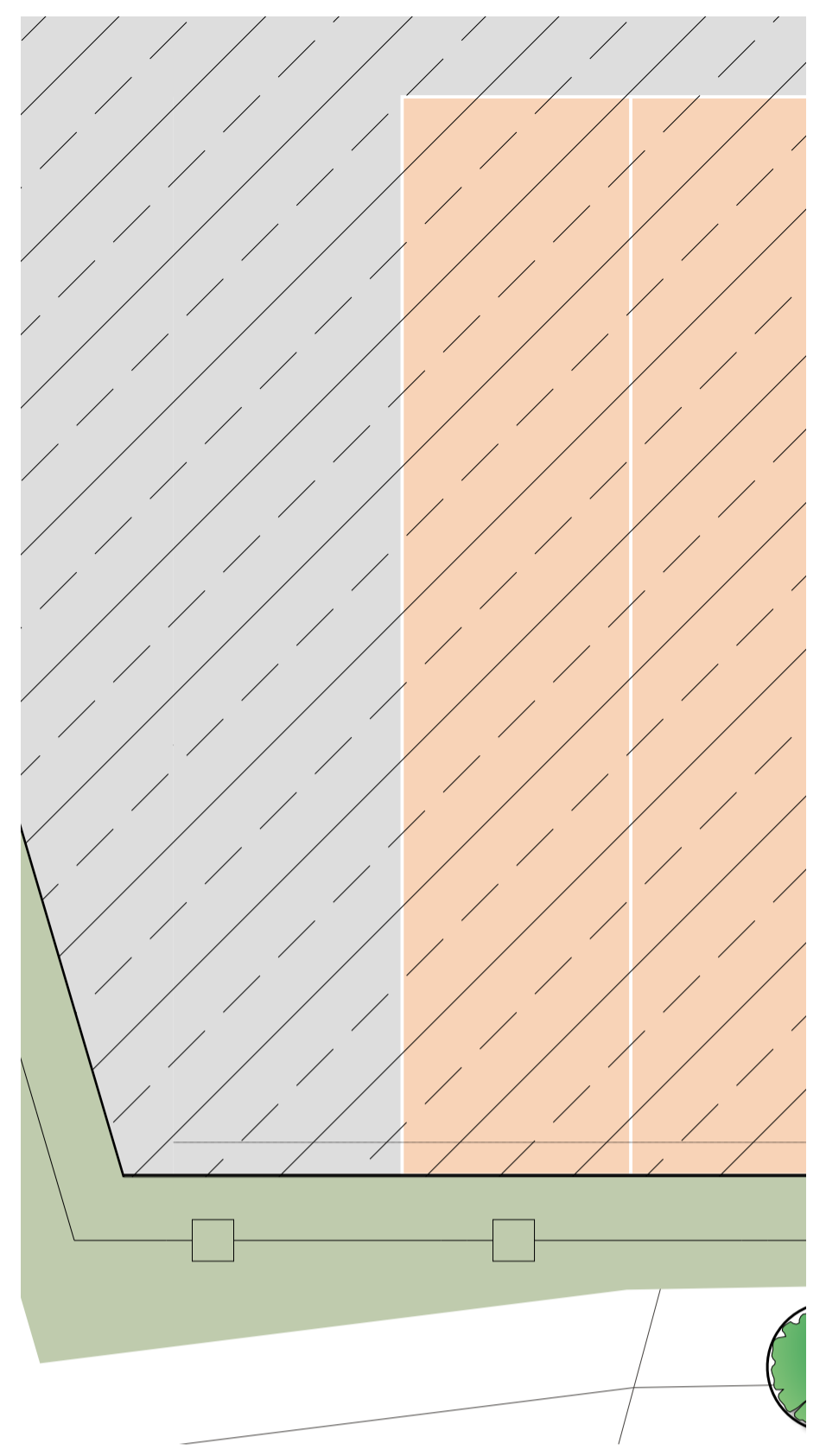
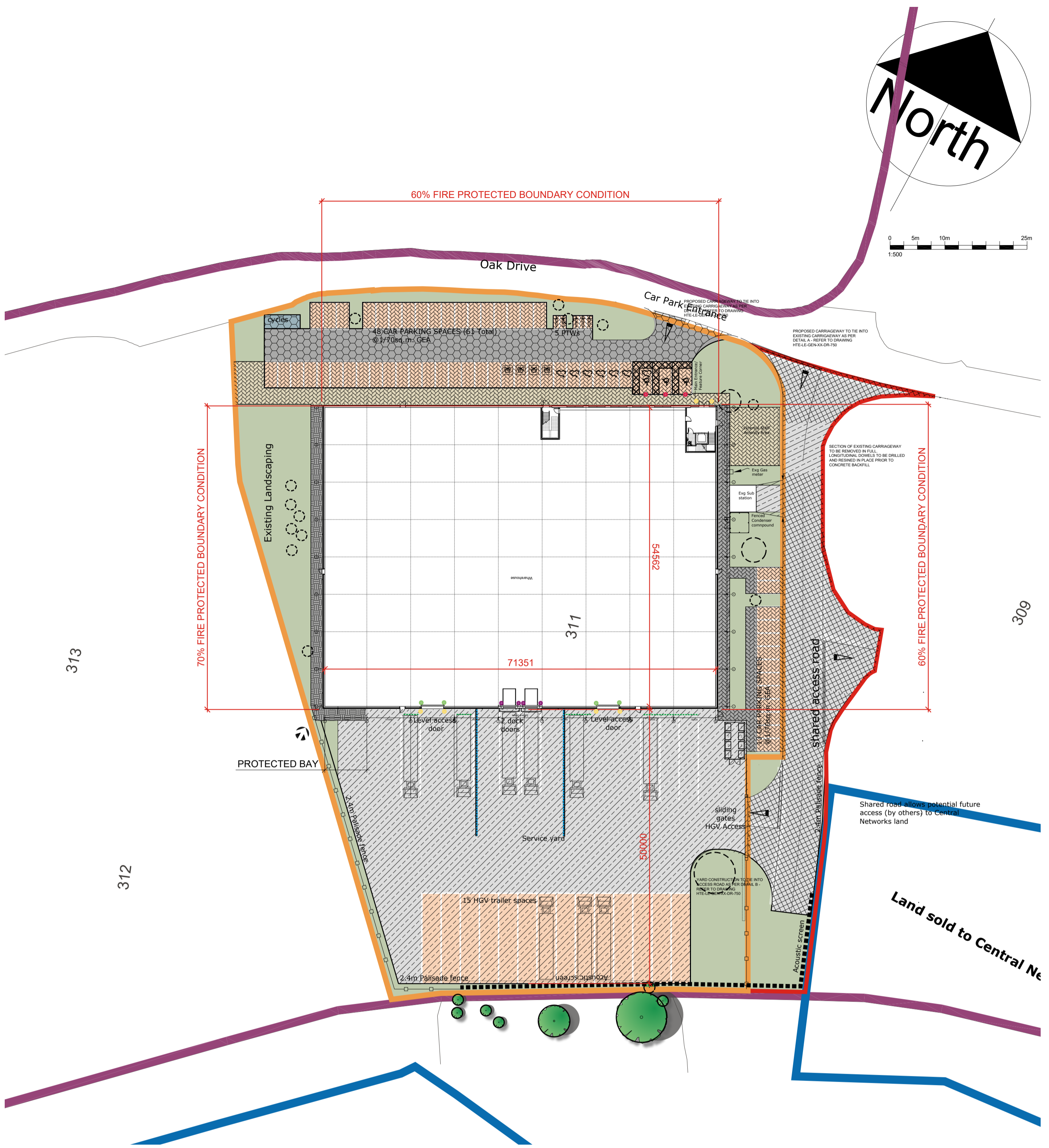


Rev	Date	By	Description
A	15.07.2022	AK	Updated to Tender Review Comments
B	20.07.2022	AK	External surface finishes updated
C	02.08.2022	FR	Updated no. of EV spaces to 7
D	02.09.2022	mjm	Additional Car Sharing Space indicated as required under BREEM Tra02



Unit 311 Schedule:

OFFICE: 308 SQM / 3,316 SQFT
WAREHOUSE: 3,831 SQM / 41,237 SQFT

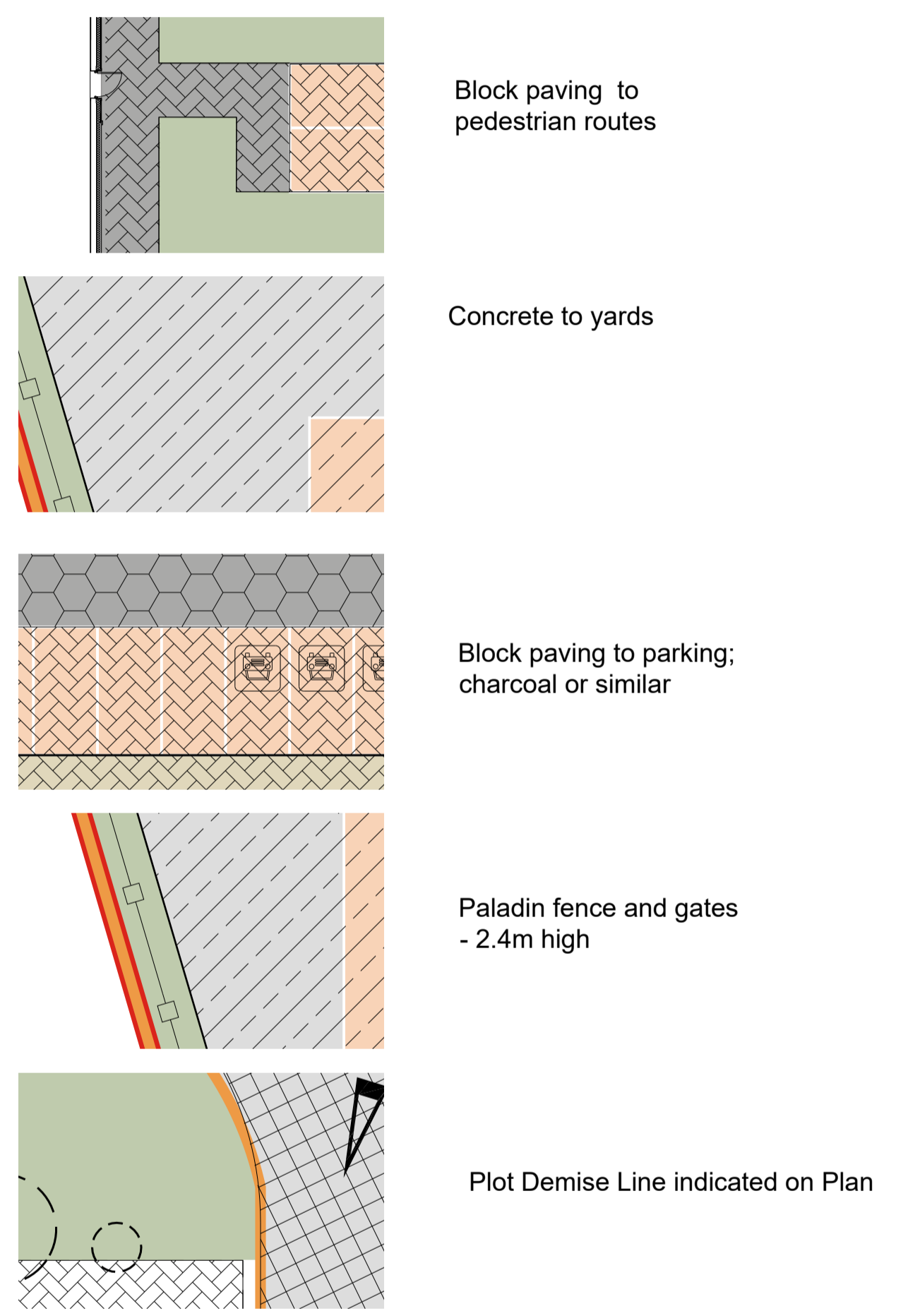
TOTAL GIA: 4,139 SQM / 44,552 SQFT
TOTAL GEA: 4,319 SQM / 46,488 SQFT

HAUNCH HEIGHT: 10M

CAR SPACES: 61 (INC. 3 ACCESSIBLE)
DOCK DOORS: 2
LEVEL ACCESS DOORS: 2
HGV PARKING SPACES: 15
CYCLE SPACES: 10

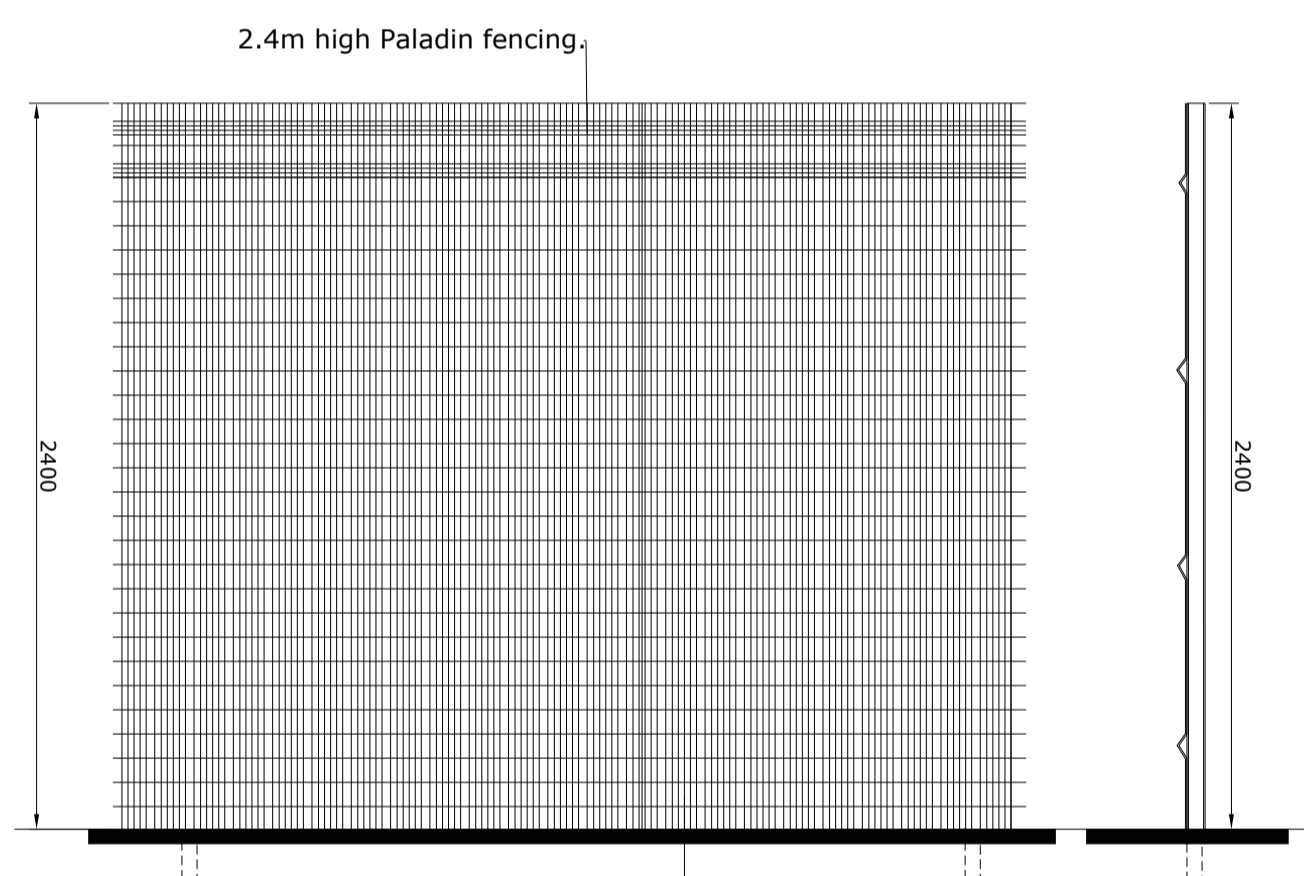
SITE AREA: 1.09 HECTARES

EXTERNAL FINISHES



HGV PARKING BAYS (AT YARD EDGE)
100mm wide yellow thermoplastic marking to HGV bays

HGV PARKING BAYS (AT BUILDING EDGE)
100mm wide yellow thermoplastic marking to HGV bays

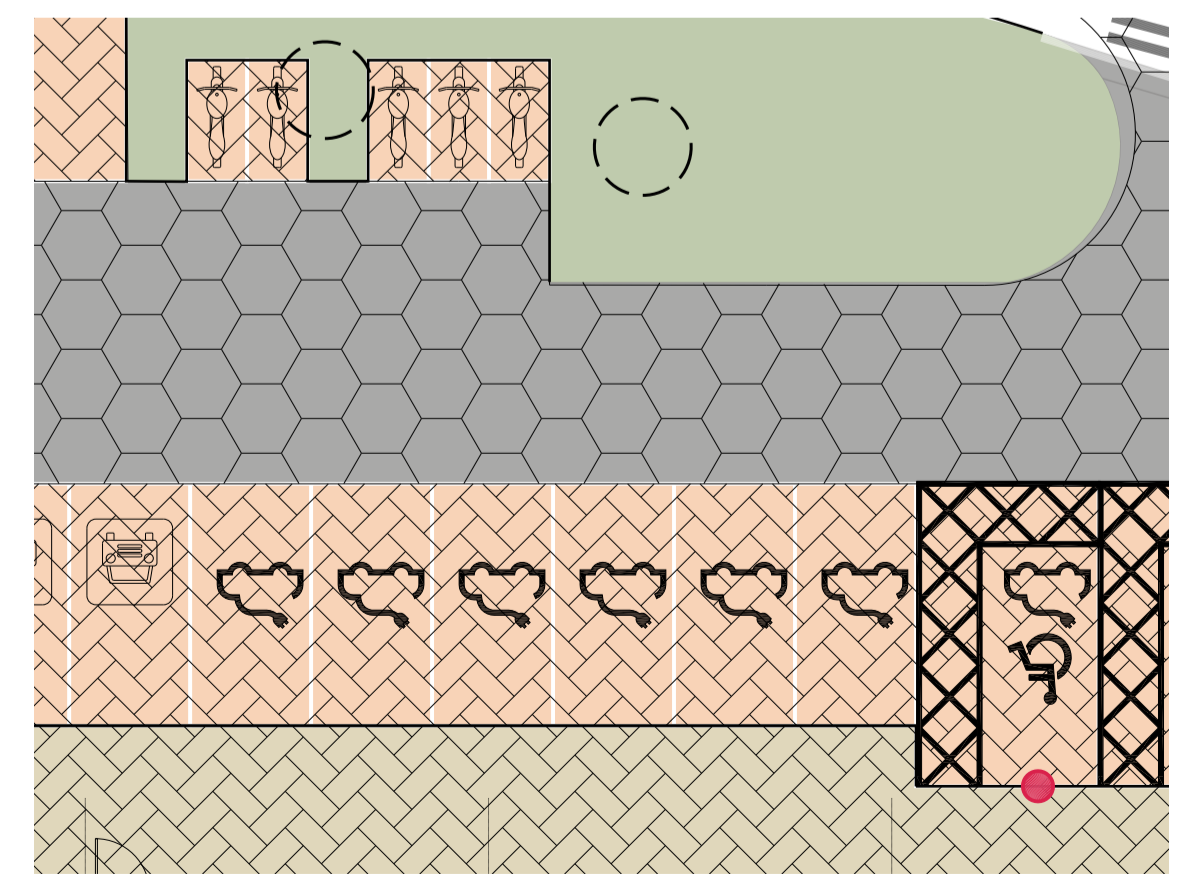
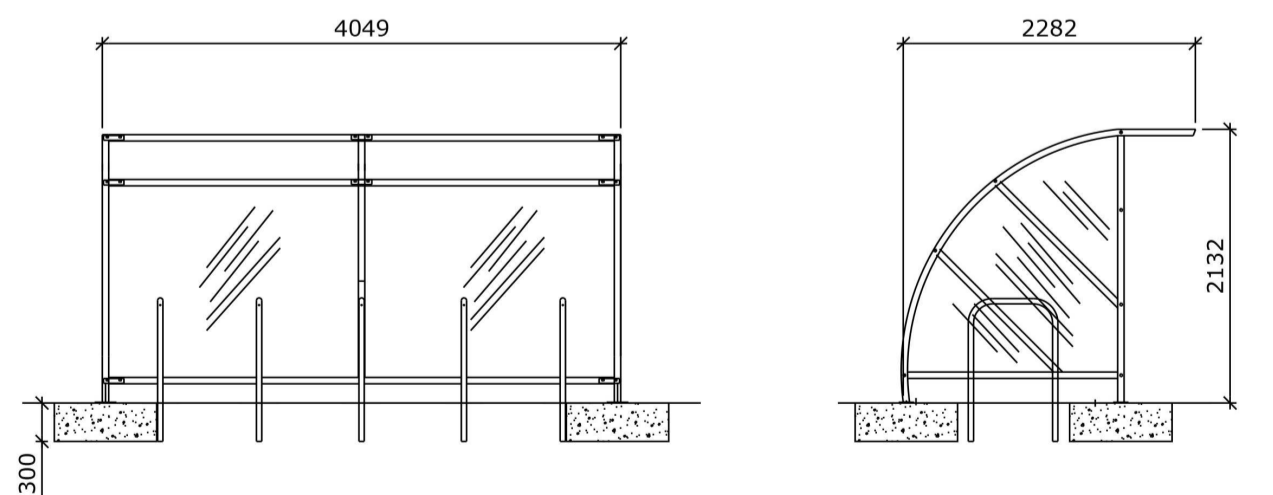
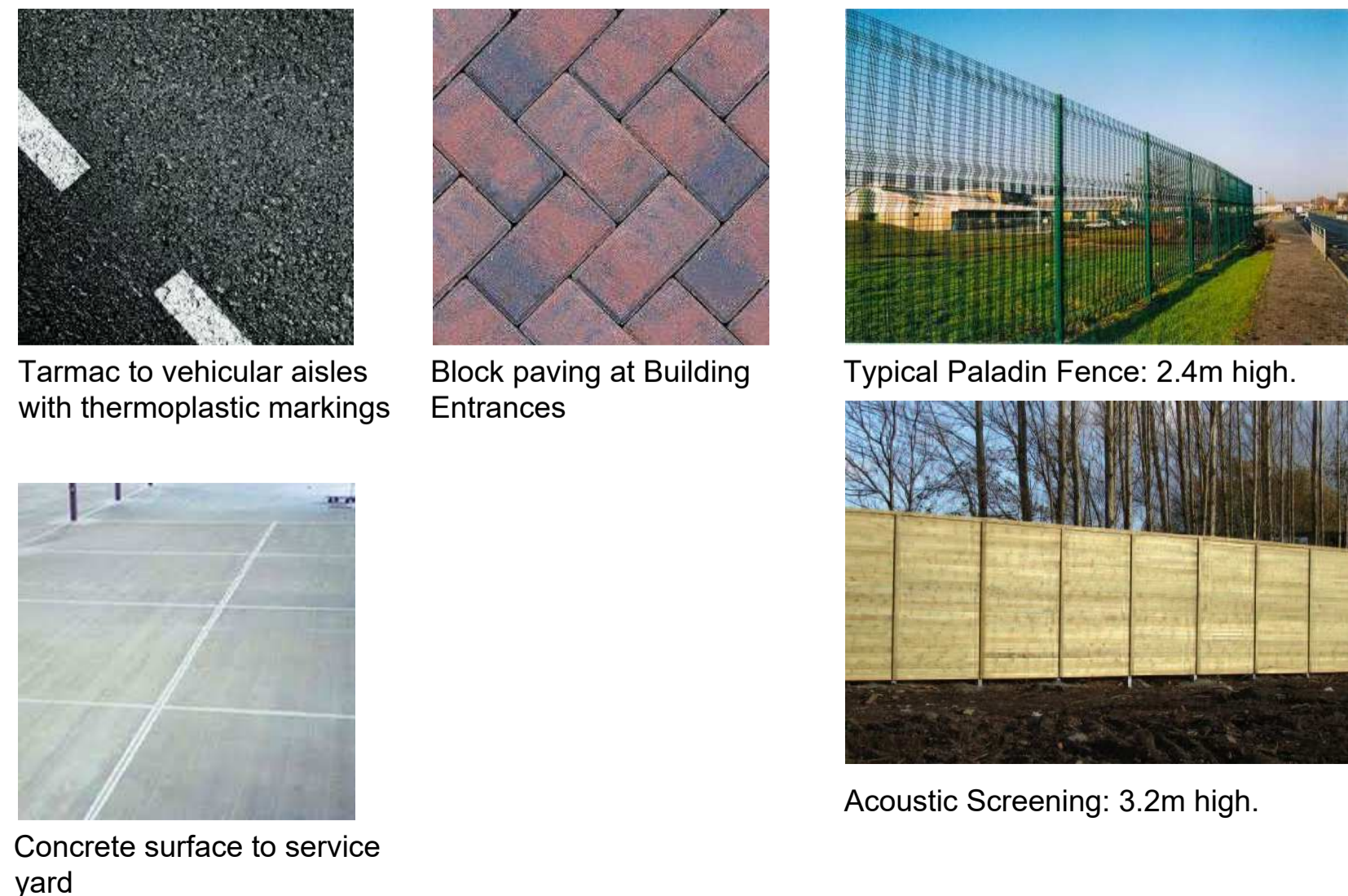


Notes:

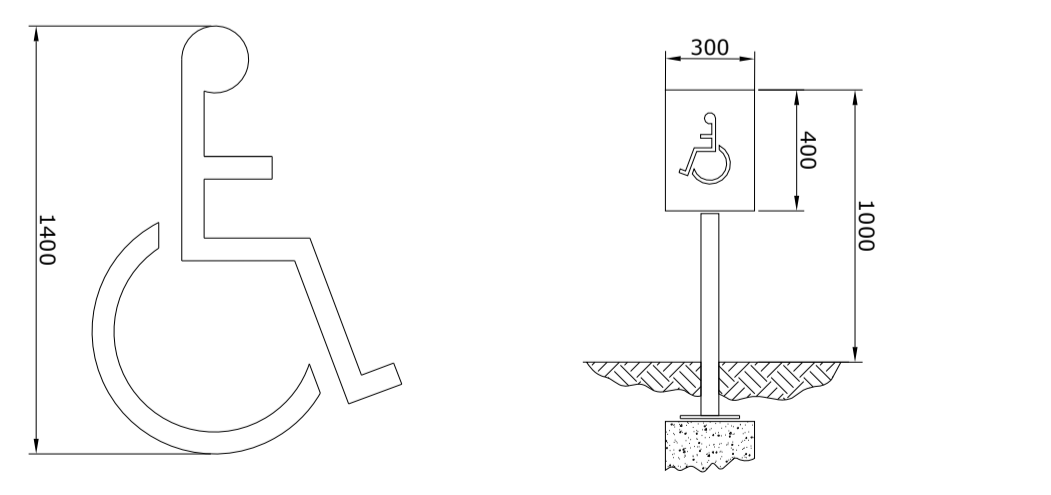
- Post and struts - Galvanised pier to painting. Post - 60x60 at 2.5m.
- Fence panel Colour to be green to perimeter and blue where adjacent to the building

Paladin fence to finish at ground level (max 50mm from bottom of fence to ground at any point).

Scale 1:25
Paladin Fence Details (to Service Yard)



PARKING BAYS
thermoplastic marking to Accessible bays, EV charging bays, car share spaces and motorcycle bays



Accessible parking logo and signage to every Accessible parking Bay

SGP

Architects + Masterplanners

Waterfront House
2a Smith Way
Grove Park
Enderby
Leicester LE19 1SX

t: +44 (0)116 247 0557

www.stephengeorge.co.uk

Hartlebury 45 Trading Estate
Unit 311

Drawing Name:
Site Plan

Drawing Stage: TENDER

Suitability: S3 - For Review & Comment

SGP File Ref: 13125-SGP-006-EG-DR-A-201001(D) - Site Plan.dwg

13-125 14/06/22 FR JN 1:500 @ A1 D
SGP Project No. Date: Drawn: Team: Scale: Rev:

Drawing Number:
13125 -SGP-006-EG-DR-A- 201001
Project Code Originator Volume Level Type Role Number